

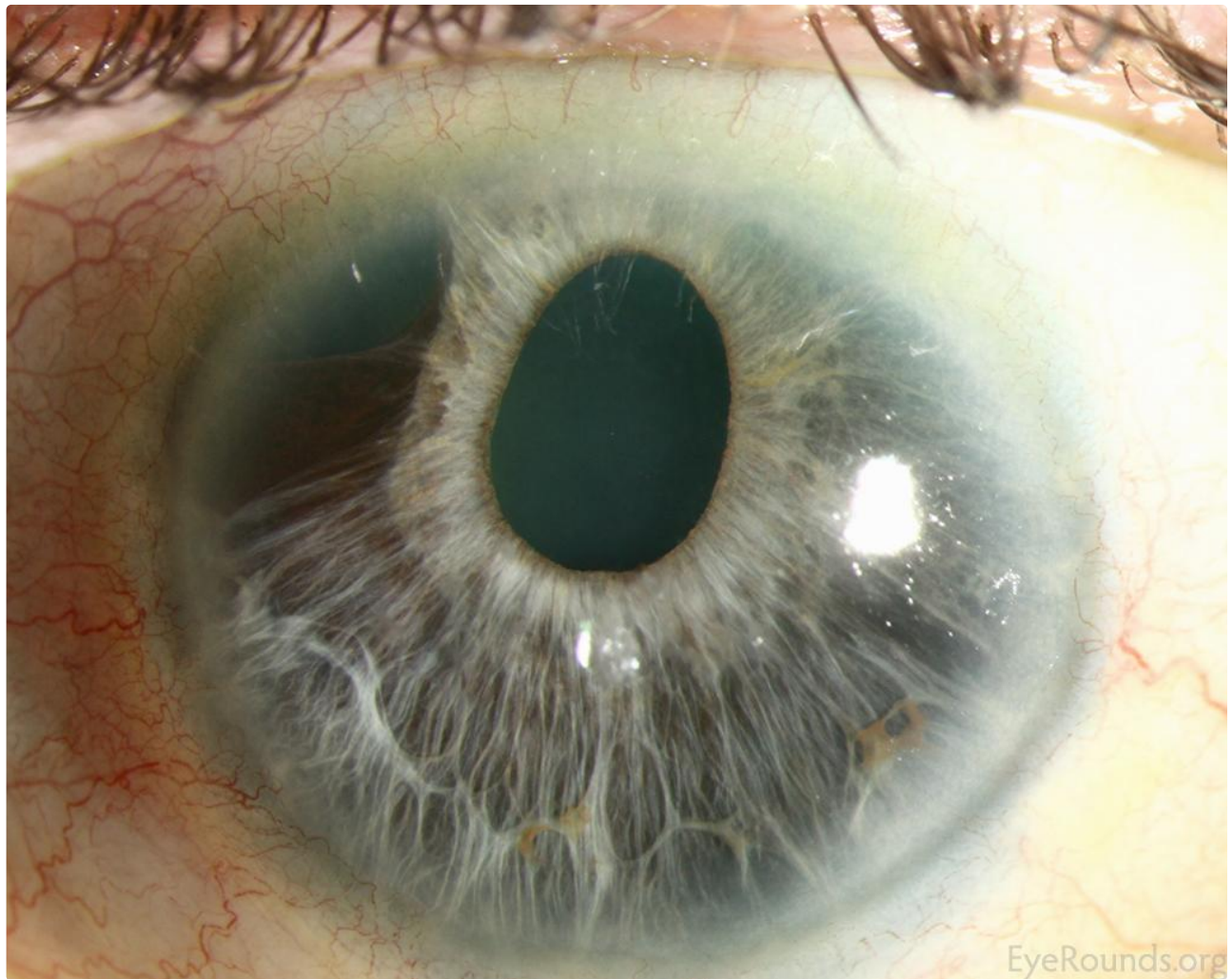
Essential iris atrophy, iridocorneal endothelial (ICE) syndrome

Category(ies): Cornea, Iris

Contributor: [Jesse Vislisel, MD](#)

Photographer: Carol Chan, CRA

Essential iris atrophy is one of the subtypes of iridocorneal endothelial (ICE) syndrome. In this condition, an abnormally proliferating corneal endothelium grows across the trabecular meshwork and iris to form broad peripheral anterior synechiae (PAS), ectropion uveae, and iris stretch and melt holes. This photograph shows corectopia with a superotemporal iris melt hole in a patient with essential iris atrophy. The patient also had extensive PAS on gonioscopy.



[Enlarge](#)

[Download](#)

Image Permissions:





Ophthalmic Atlas Images by [EyeRounds.org](https://www.eyerounds.org), [The University of Iowa](https://www.theuniversityofiowa.edu) are licensed under a [Creative Commons Attribution-NonCommercial-NoDerivs 3.0 Unported License](https://creativecommons.org/licenses/by-nc-nd/3.0/).



Related Articles



Andrew Doan, MD, PhD
U of Iowa 2004

[Related Case: Iridocorneal Endothelial Syndrome \(ICE\) - essential iris atrophy](#)

Address

University of Iowa
Roy J. and Lucille A. Carver College
of Medicine
Department of Ophthalmology and
Visual Sciences
200 Hawkins Drive
Iowa City, IA 52242

[Support Us](#)

Legal

Copyright © 2019 The University of
Iowa. All Rights Reserved
[Report an issue with this page](#)
[Web Privacy Policy](#) |
[Nondiscrimination Statement](#)

Related Links

[Cataract Surgery for Greenhorns](#)
[EyeTransillumination](#)
[Gonioscopy.org](#)
[Iowa Glaucoma Curriculum](#)
[Iowa Wet Lab](#)
[Patient Information](#)
[Stone Rounds](#)
[The Best Hits Bookshelf](#)

EyeRounds Social Media

Follow



Receive notification of new cases,
sign up here

[Contact Us](#)

[Submit a Suggestion](#)